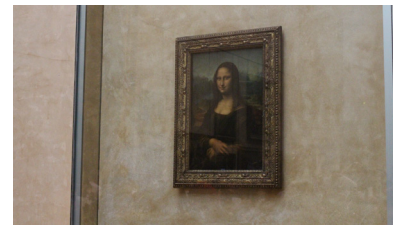
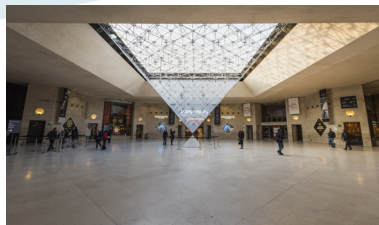
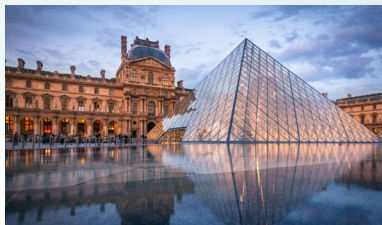


Culture



MUSÉE DU
LOUVRE



Located in the 1st arrondissement of Paris, the Louvre Museum is distinguished by the glass pyramid of its reception hall, erected in 1989 in the Cour Napoléon.

The Louvre Museum is the largest art and antiquities museum in the world. It houses more than 500,000 works of art in an area of 360,000 m², including 72,735 m² of galleries. With approximately 10 million visitors per year, the Louvre is the most visited museum in the world.

The challenge

The Louvre Museum as an establishment receiving the public is subject to legal obligations in terms of fire and panic prevention.

More than 400,000 non-exhibited works of art are stored in conditions that must guarantee their preservation without any deterioration. The doors must protect them from humidity, fire, smoke and unwanted intrusion.

The Heinen solution

The Heinen team and its installation partners are involved in the technical support of appropriate solutions to meet the requirements of the standards in force.

The doors supplied and installed are fire-resistant, burglar-proof and comply with ERT -ERP (Etablissement Recevant des Travailleurs ou/et du Public) standards. The doors must ensure longevity and minimum maintenance under extreme conditions.

Year of cooperation

More than 20 years

Key figures



More than 100 doors:
Fire resistance and burglary resistance
Swing doors

Installer

I & A DUFOUR
Ingénierie et Ateliers DUFOUR

SOLUTIONS COUPE-FEU
gesop